

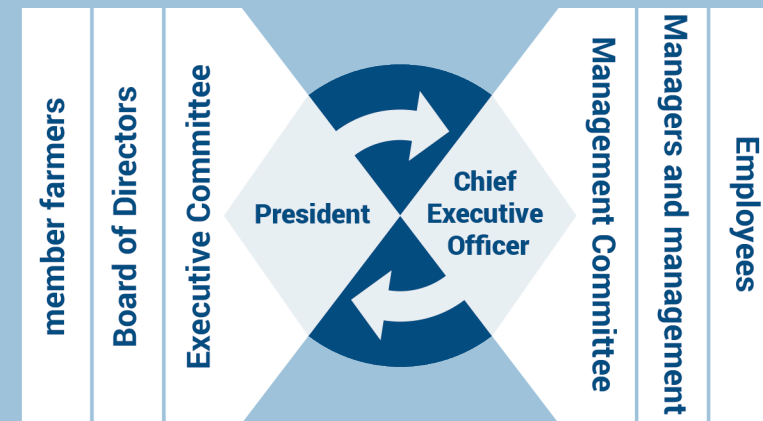
## Identity

Even, is a cooperative dairy group founded in Brittany in 1930. With 1,100 farmer members and 6,040 employees, it is now a recognised player of the French food industry. From the outset to the present day, Even's ambition has been clear and remains unchanged: to provide good, healthy food for all, while sustainably creating human and economic wealth for our member farmers, our employees, for Brittany and the other regions into which we are established.



## Governance

Built on a contemporary cooperative foundation, Even collectively and indivisibly belongs to its dairy member farmers. 16 member farmers, elected by their peers, form together with Guy Le Bars, President of Even, the Board of Directors. The Management Committee is composed of a Chief Executive Officer, Christian Griner, and six directors.



## Our commitments

- 1 Guaranteeing the future of farms
- 2 Developing our human capital
- 3 Serving clients and consumers with dedication
- 4 Ensuring occupational health and safety
- 5 Reducing our environmental footprint
- 6 Promoting environmentally-friendly agriculture
- 7 Developing an innovative and socially responsible agri-food offering
- 8 Investing to stay ahead of the game
- 9 Working in favour of regional development



**MEMO**  
Edition 2023

# Even Upstream

Local contact point  
for Breton farmers



140 employees

2 industrial sites

14 stores

130 million euros  
turnover



Milk production

Agri-supplies and self-service supply stores

Animal nutrition and swine genetics

# Laïta

A cooperative dairy company  
on a European scale



3 010 employees

7 industrial sites

1,4 billion litres  
from milk collected  
in 2,460 dairy farms

1,6 billion euro turnover



Consumer products

Health nutrition products

Dairy ingredients

Young mammal feeds

# Even Distribution

A specialised French distributor

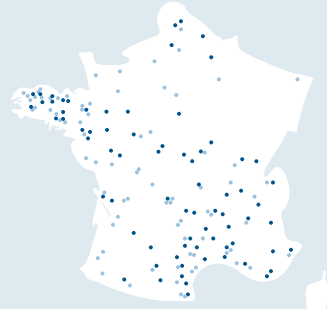


2 710 employees

24 companies

153 sites

720 million euros  
turnover



Home delivery

Food service sector

# Even Development

Diversification division with strong  
added value



180 employees

3 industrial sites in  
curing and prepared meals

40 million euros  
turnover



Curing

Prepared meals